

Green Map

Green Spaces

- Major Park
- Athletic Field
- Watchable Wildlife
- Special Plants
- Waterfront Park
- Boat Launch (existing)
- Site of HMDC boat tours
- Boat Launch (proposed)
- Environment Center
- Golf Course
- Enhanced Wetlands
- Scientific/Research Area
- Flyover Zone
- Compost Site
- Landform
- Redevelopment Area

- Parklands
- Wetland and Conservation Areas
- Landfill Restoration Areas
- Water Bodies

Trails

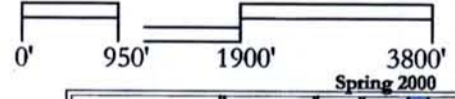
- Meadows Path (existing)
- Meadows Path (proposed)
- Hackensack Greenway (existing)
- Hackensack Greenway (proposed)
- Water Trail (canoe/boat)

Mobility

- Rail/Transfer Station
- Light Rail Transit
- Park & Ride Facility
- Historic Feature
- Rail Line

Infrastructure

- Radio Tower
- Energy Facility



Produced by: HMDC Landscape Architecture Group
Map available in 24" x 36" size

The Green Map System (GMS) charts the interconnections between nature and culture in urban places. Each Green Map is created locally and utilizes globally designed green space icons; a shared language of symbols. The Green Map System is a not-for-profit organization. To learn more about GMS visit www.greenmap.org. Email infor@greenmap.org or call 212-674-1631. For further information on the HMDC visit our web site at www.hmdc.state.nj.us. Comments, larger maps, and brochures: Email kweidel@hmdc.state.nj.us or write HMDC c/o Green Map, 1 DeKorte Park Plaza, Lyndhurst, New Jersey, 07071.

In the Meadowlands there are award winning parks planted with special trees. We are located on the Atlantic Flyway, a major migratory corridor. Don't miss our nationally acclaimed Environment Center, where you can sign up for a walking tour or book an evening cruise to see wildlife. Visit our waterfront parks, where you can canoe one of our water trails. Our wetlands provide critical habitat for plants and animals and serve as a living laboratory for scientific research. We have unique landform/geological features, both natural and man-made, including landfills. Former landfills serve many beneficial uses: wildlife habitat, recreational opportunities, and regional compost sites. Visit us on foot, use public transportation, or use our park & ride lot. This map will help chart your course to the beauty, brilliance and diversity of the Meadowlands.

What is a Green Map? * Green Maps indicate environmentally significant "green" sites - outstanding places of natural beauty, wildlife habitats, environmental centers, nature paths, cultural sites and even the infrastructure and man-made features that make an area special. Each of the green sites and other eco-resources is indicated by a green map icon; a globally-shared language of symbols. The icons make it easier to find important places and help to illustrate the interconnections between nature and the built environment.



The two major trail projects indicated on the Green Map are *Meadows Path* and the *Hackensack Greenway*. Both trails serve as green corridors that wind through towns and natural areas, connecting parks and other open spaces. *Meadows Path* is a 25.5 mile trail system running parallel to the western

Parks and Trails

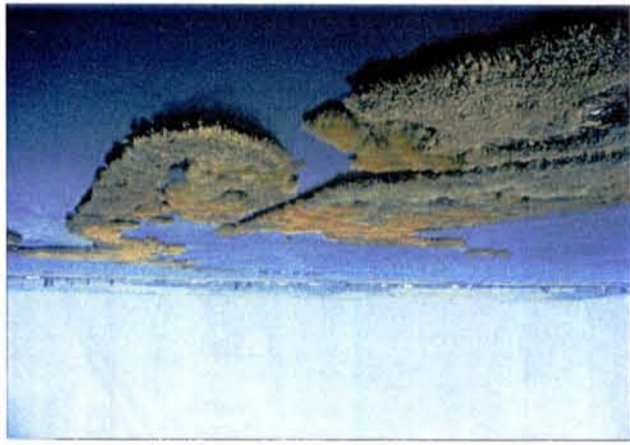


Wetlands are a vital component of a healthy environment. HMDCC has acquired approximately 1,150 acres of wetlands in the last few years. These wetlands purify water, alleviate flooding, and provide critical habitat for hundreds of species of plants and animals.

Wetland Conservation Areas

bank of the Hackensack River from Little Ferry to Kearny. The *Hackensack Greenway* is a 15 mile trail running parallel to the eastern bank of the Hackensack River from North Bergen to Jersey City. Together, these trails will create 40.5 miles of non-vehicular green arteries through 11 of the 14 districts municipalities, linking open spaces, neighborhoods and commercial developments both within and outside the District Landfill Restoration Sites. Existing and former landfills are being reclaimed because they are the last open

spaces in this densely populated region. The transformation from the garbage dump to wildlife habitat and recreational area occurs after landfills are closed according to state standards. All of the major water bodies after years and decades are identified in the district are identified on the map. **We hope you enjoy your tour!**



This Green Map shows all of the open space acreage planned for preservation in the Hackensack Meadowlands District. Included are:

HACKENSACK MEADOWLANDS DEVELOPMENT COMMISSION

GREEN MAP



1 DeKorte Park Plaza Lyndhurst New Jersey 07071

The Hackensack Meadowlands Development Commission



Acting Governor
Donald T. DiFrancesco

Chairman
Jane M. Kenny

Commissioners
Michael J. Gonnelli
Janet R. Higgins
Mia M. Macri
Eleanore S. Nissley
Harry K. Parsons
John J. Rose

Executive Director
Alan J. Steinberg

For further information contact the HMDC Landscape Architecture Group at:

1 DeKorte Park Plaza Lyndhurst, New Jersey 07071
Telephone: 201-460-1700 Fax: 201-460-8434
Web Site: www.hmhc.state.nj.us
e-mail: bdjimopoulos@hmhc.state.nj.us