

Rhode Island Greenways Map

Leave the Car Behind...

Choose the environmentally friendly way to get to the trails. Go RIPTA! Racks are attached to the front of all RIPTA buses and fit most bikes at no extra charge. Limited to the Summer, ending at daylight savings time. Call RIPTA's 24-hour Rider Information line at (800) 244-0444. RIPTA Bus Routes serve most greenways. For bus scheduling information call RIPTA, (401) 222-6479.

Give Two Wheels a Try

The East Bay Bike Path

The diverse natural beauty of the Ocean State is another benefit for bicycle enthusiasts. One of the local favorites is the East Bay Bicycle Path. Stretching 15 scenic miles from Providence to Bristol with panoramic views of Providence Harbor and Upper Narragansett Bay, this paved, Class-1 bikeway passes through seaside villages, picture-perfect parks, and coastal marshes and ponds. This path is 10' wide, asphalt-paved, and has 4' sidewalks available for wheelchairs, walkers and bicycles. Call the RI Dept. of Transportation's Bicycle Coordinator at (401) 222-2694, ext. 4034.

Colt Park Bike Trail

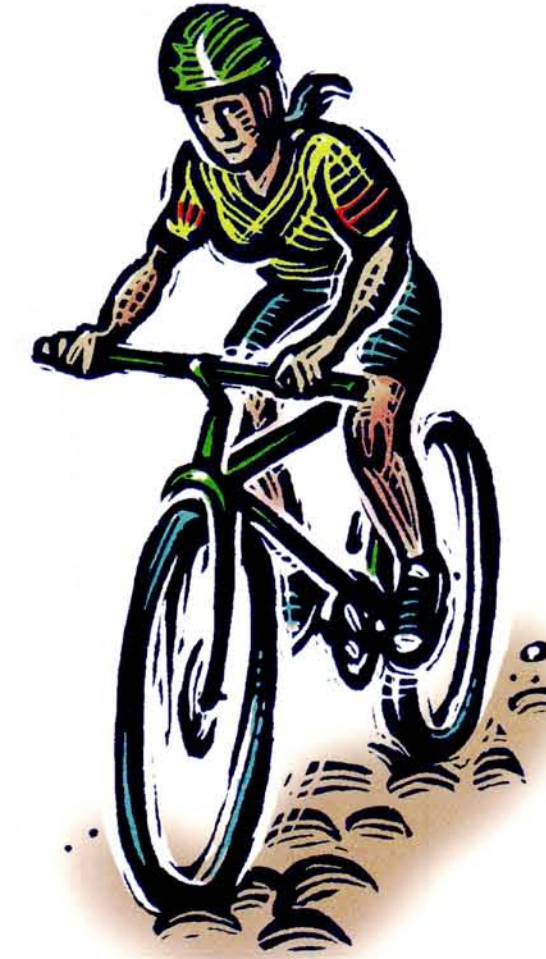
For a picturesque shoreline ride through the grounds of the former Colt family estate, try this three-mile bike loop with amazing views of Narragansett Bay and pastoral coves and marshes. (Access from the East Bay Bike Path.)

Wilson Park Bikeway

A 1.5-mile loop circling the 75-acre Wilson Park in Wickford, this bike path offers picnic spots, hidden coves, water views, and nearby shopping for antiques and boutiques in this historic village (the setting for John Updike's *Witches of Eastwick*). Be sure to bring the kids along, the park features a terrific playground.

Blackstone River Bikeway

The first 3 mile section of this 19-mile path opens in the Fall of 1998, and will offer a transportation system for the Blackstone Valley National Heritage Corridor between Providence and Worcester. Paralleling the river, the trail affords spectacular views of New England foliage in autumn. Call the RI Dept. of Environmental Management at (401) 222-2776.



On the Waterfront

Blackstone River Valley National Heritage Corridor

Encompassing 250,000 acres from nearby Worcester, MA, to Providence, RI, this national park is preserving and interpreting the historical significance of a region known as the birthplace of the American Industrial Revolution. Recently designated as an American Heritage River, the corridor is home to numerous historical sites, including the stately Slater Mill and the Roger Williams National Memorial, as well as waterfront parks and canoe, kayak, and boat access. A guided riverboat tour is offered by the Blackstone Valley Tourism Council. Call (800) 619-2628 to find out times. For information on the corridor, call (401) 782-0250.

The Pawtuxet River Greenway

Packed with recreational opportunities for every member of the family to enjoy, the lower Pawtuxet offers a three-mile loop starting at Rhodes on its north branch, crossing the river at Warwick Avenue and ending at Post Road in historic Pawtuxet Village. Blue heron, muskrat, ducks, and turtles are just a few of the animals a canoeist's might encounter along the eight-mile run from the Pontiac Mills to Rhodes on the Pawtuxet. The river also offers two short walking trails at Arkwright on its north branch. For information on the Arkwright River Trails call the Pawtuxet River Authority at (401) 828-5650.

Wood Pawcatuck Rivers

This is where you will find dedicated canoe lovers, attracted by more than 56 miles of pristine, forested waterways, abundant wildlife, lakes, and ponds. Trout fishers also call home this river that runs from Worden's Pond to Little Narragansett Bay at Westerly. Contact the Wood Pawcatuck Watershed Association at (401) 539-9017.



At the Canoe Canal Access, Lincoln



Walk this Way...

The North South Trail

Meandering 72 miles through rural western Rhode Island, this trail traverses eight towns and passes through seven State-owned forested management areas. While principally a multi-use trail, accommodating hikers, equestrians, and mountain bikes, some segments are restricted to hikers only. While most sections are off-road, certain links run along town roads. The North South Trail Council sponsors an annual trek traveling the entire route over several successive weekends each Spring. Contact the Council at (401) 781-8117 for maps and information on events.

Block Islands Greenways

The Nature Conservancy has designated Block Island, 12 miles off the RI coast, as one of the "Last Great Places in the Western Hemisphere." And you'll too after exploring 25 continuous miles of walking and hiking trails that provide the ultimate way to see Block Island's grassy meadows, stone walls of the inland moors, majestic Mohegan Bluffs, plentiful wildlife, and romantic 19th-century architecture. Call (401) 466-2129 for information or, when on the island, stop by the Nature Conservancy office in New Harbor for a trail map.

Newport's Cliff Walk

This walkway definitely lives up to its name! Set high on the rugged Newport coastline, the 3-mile Cliff Walk provides some of the best views of the Gilded Age mansions and their meticulously landscaped grounds. Call the Newport County Convention and Visitors Bureau at (401) 849-8048.

Providence River Walk

Centered around the city's maritime heritage, Providence's revitalized downtown has focused once again on the waterfront. Rivers have been rerouted to reveal waterways edged by beautifully landscaped riverwalks. Venetian-style bridges now connect downtown Providence to the College Hill and historic East Side areas.

...Continue Walking

Providence Waterplace Park

For a city excursion with artistic flair, don't miss Providence's newest and nationally acclaimed event, Providence Waterfire. Sixty bonfires illuminate the city's scenic river canals and tantalize the senses with reverberating music and the soft scent of burning cedar logs. Stroll along cobblestoned riverbank walkways leading to Waterplace Park; paddle a canoe or kayak on the river itself, or glide by the outdoor bistros on a Venetian gondola as the drama unfolds. Contact the Providence/Warwick Convention and Visitors Bureau at (800) 233-1636 for information and Waterfire performance dates.

Blackstone Boulevard

Walkers, joggers, and bicyclists love to use this favorite 1.5-mile East Side trail. The tree-lined boulevard and stately homes provide a park-like atmosphere with plenty of beautiful scenery.

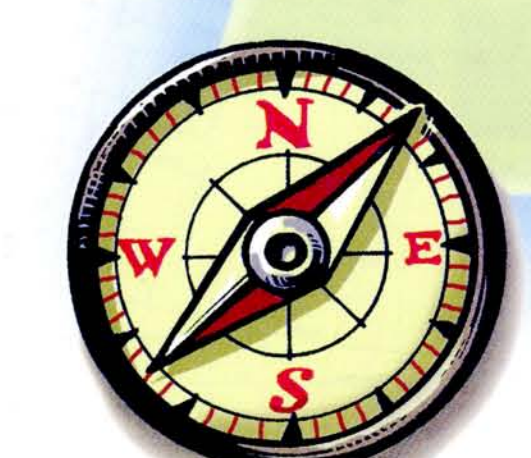
Coventry Greenway

A converted railway, this five-mile, unpaved greenway is popular with many hikers and bicyclists as a great way to enjoy the great outdoors. Three miles of the trail have been designated as the first Rhode Island segment of the East Coast Greenway, which will span from Maine to Florida. Contact Coventry Parks & Recreation at (401) 822-9107.

Arcadia Management Area Trails

With 14,000 acres, this impressive recreation area in the southwestern part of the state is home to many sports including hiking, mountain biking, swimming, horseback riding, and motorcycling. Arcadia is just one of 14 parks and campgrounds, five beaches and a host of management areas run by the state's Dept. of Environmental Management. Open to the public, these places feature trails, pond and stream access, and outdoor spots for picnics and get-togethers. For more information call the Arcadia Management Area at (401) 539-2356.

Rhode Island Greenways Map



The Explorer on the Blackstone River



Waterfire along the Providence River Walk



The Audubon Society's George Parker Woodland, Coventry



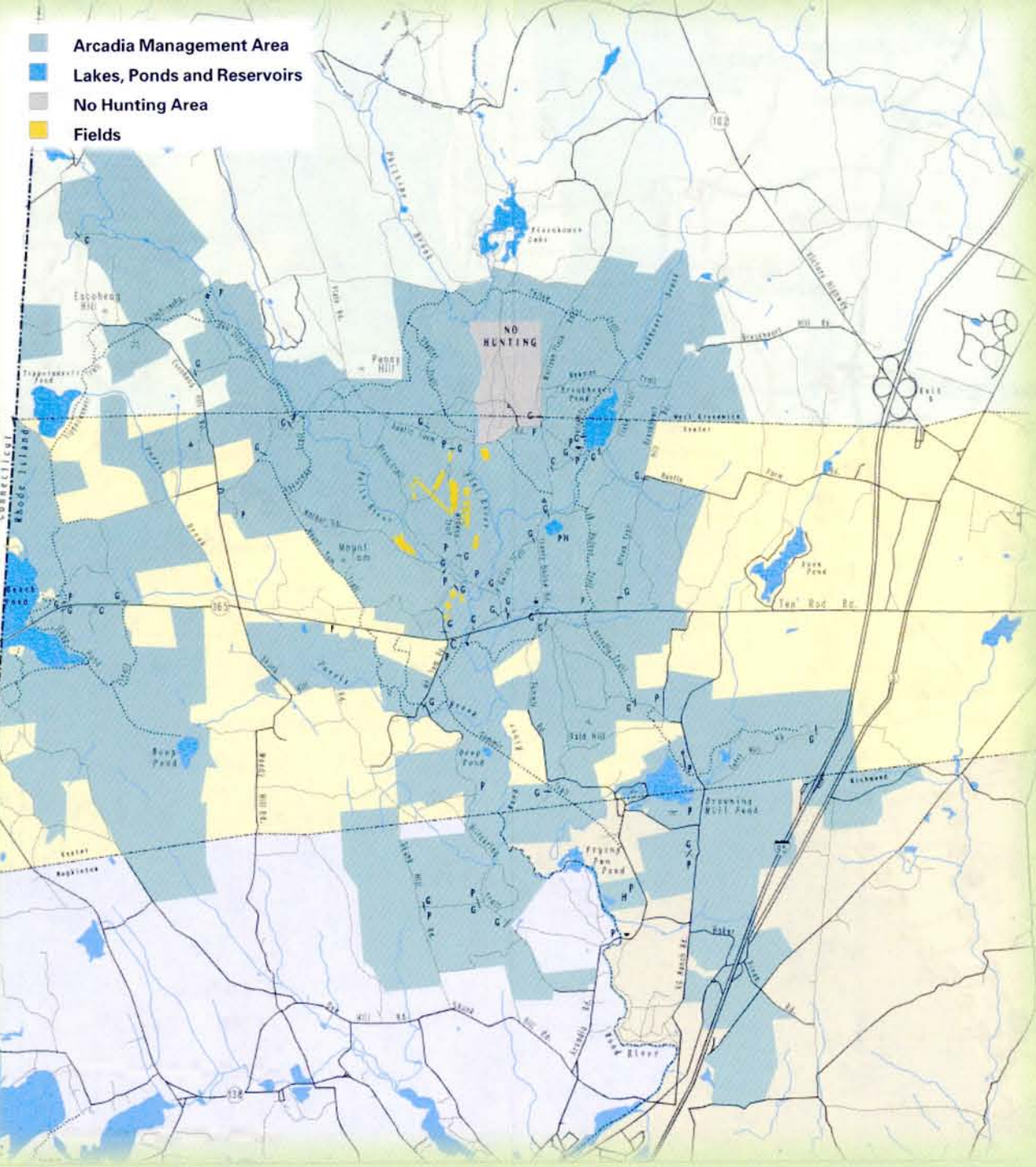
The Cliff Walk, Newport

Greenways	RIPTA Bus Routes	Greenway Stops/City or Towns	Notes
Blackstone Blvd.			
from Providence	40 - Blackstone Tunnel	Serves entire Boulevard	
from East Providence	38 - Rumford Tunnel	For southern end of Blvd. Hope St. & Blackstone Blvd., Providence	
from Pawtucket	42 - Hope Tunnel	For northern end of Blvd. S. Angell St. & Butler Ave., Providence	
Blackstone Valley National Heritage Corridor & Blackstone Bikeway			
from Providence	42 - Hope St.	Slater Mill, Main St. & Roosevelt Ave./Downtown Pawtucket hub, Pawtucket	Conductor vehicle center adjacent RIPTA Pawtucket hub. Wheelchair ramp located on route 88, 87, and 84.
	54 - Woonsocket	Visitors Center Museum of Work & Culture, Main St. & Social St., Woonsocket	
	98/99 - Providence & Pawtucket	Roger Williams National Memorial, N. Main, Smith St., Providence	
from & throughout Pawtucket and Central Falls	71 - Broad St.	Slater Mill, Main St. & Roosevelt Ave./Downtown Pawtucket hub, Valley Falls Heritage Park, Broad St. & Mill St., Cumberland	Other routes 75, 76, 77, 78, 80 of Pawtucket local services terminate at the following Conductor vehicle center.
Mid-Valley service	68 - Cumberland Hill	Many stops along roads paralleling River and future bikeway (Saturday service only)	
	95 - Albion/Marville		
Cliff Walk			
from downtown Newport	Newport Local - Orange line Beach - Corporate Park	For northern end of Cliff Walk: Memorial Blvd. & Eustis Ave., Newport	Service originates at Newport Gateway Center; connections to Providence & South County area.
	Newport Local - Yellow line Bellevue - Mansions - Salve	For southern end of Cliff Walk: Bellevue Ave. & Cogshall Ave., Newport (Summer service only)	
Coventry Greenway/East Coast Greenway			
from Providence	13 - Arctic Washington	Main St. & Station St. at Washington, Coventry	Low volume East Coast Greenway segment under construction in West Warwick & Pawtucket.
East Bay Bike Path			
from downtown Providence	36 - Warren Ave.	Pawtucket Ave. & Turner Ave., East Providence	
	37 - Taunton Ave. via Wickeden	Country Rd. & Maple Ave., Barrington	
from downtown Providence	45 - E. Providence Crosstown	Gano St. & Trenton St., Providence	
from Central East Providence & Fox Pt. in Providence	60 - Providence-Newport	Pawtucket Ave. & Turner Ave., East Providence	
from Newport, East Bay, or Providence		Crescent View Ave. & Brezze Ave., East Providence	
		Main St. & Franklin St., Warren	
North-South Trail			
from Providence & northern Providence County	9 - Pascoag-Wallum Lake	Zambrano Hospital at Wallum Lake, Burnsville	
from Providence, Johnston, Schuette	10 - North Scituate	Books Hill Rd. & Wallum Lake Rd., Burnsville	
		Grand Army Highway & Foster Center Rd., Foster	
Lower Pawtuxet Trails			
	1 - Eddy Gaspee	Broad St. & Pawtuxet Village	
Phenix-Harris & Arkwright Riverwalks			
	29 - Kent County Connector	Phenix Square	
Providence River Walk & Waterplace Park			
	All Providence inbound routes terminating at Kennedy Plaza	RIPTA Kennedy Plaza/Providence Hub, Providence	Waterplace Park is 1/2 mile north of RIPTA Kennedy Plaza Hub.
South County Bikeway & Saugutuck River Heritage Corridor			
from Galilee (Narragansett)	65 - Galilee Local	Kingston Station Intermodal Center, S. Kingstown	Ferry to Block Island available at Galilee.
from Providence	66 - Providence-URI	Kingsway Ave. & Main St., Wakefield, S. Kingstown	
from Newport & University of Rhode Island	64 - Newport-URI	Main St. & Hig St., Wakefield, S. Kingstown	
		Kingstown Rd. & Columbia St., Peace Dale, S. Kingstown	Express service from Providence
		Kingston Station Intermodal Center (Bikeway) S. Kingstown	
Woonasquatucket River Greenway			
from downtown Providence	All Providence route operating through Olneyville Square including: 17 - Dyer-Pocasset 19 - Plainfield St. 27 - Atwell Ave. 28 - Marston Ave.	Olneyville Square, Providence	Greenway trails planned for construction in 1998. Water facilities currently limited.

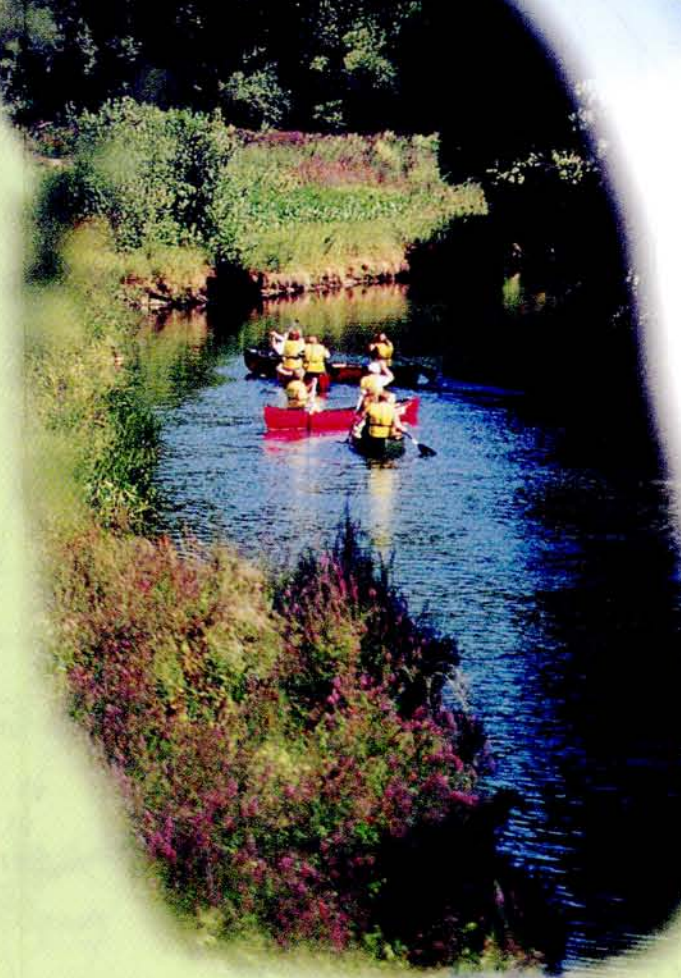


The Beautifully Restored Kingston Station in South County

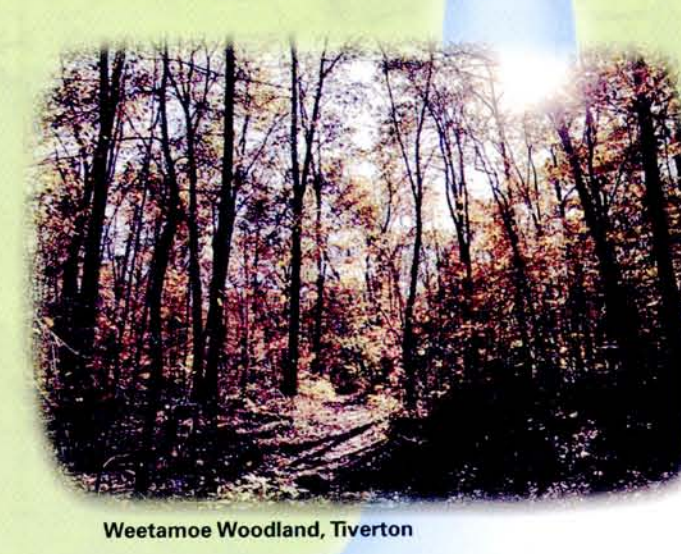
Arcadia Management Area



Map of the Arcadia Management Area showing trails, lakes, and hunting areas.



Canoeing on the Blackstone River of Northern Rhode Island



Weatamoe Woodland, Tiverton

The Movement of the Future is Underfoot

Greenways are cropping up everywhere in Rhode Island, as local groups and the state develop a comprehensive system of trails and bikeways. From the urban outdoor spaces of Providence to the sandy shores of South County and the lush preserved land of Aquidneck Island, here is a quick look at projects that are in the works and may be completed by the time you decide to visit. Be sure to call the contact numbers listed to find out if the greenway you are interested in is ready for foot traffic!

The Sakonnet Greenway

The first of several planned greenways on Aquidneck Island, this area will preserve agricultural land, provide outdoor recreation, and protect natural resources. It is already a favorite area for walking, bicycling, and horseback riding. For information, call the Aquidneck Island Land Trust at (401) 849-2793. A Cyclist's Guide to Aquidneck Island is available from the University of Rhode Island's Coastal Resources Center at (401) 874-6224.

The East Coast Greenway in Rhode Island

Part of a planned trail linking the major East Coast cities from Maine to Florida, the Rhode Island part of this expansive greenway will traverse 55 miles through 10 cities and towns. For information on the East Coast Greenway in Rhode Island, call (401) 789-1706.

Washington Secondary Bikeway

With sections opening in the Spring of 1998, this 10-mile abandoned rail corridor will soon have a new and exciting purpose! This bike path will extend from Providence to the rural Coventry line. Call the RI Dept. of Transportation, Division of Planning & Program Development, at (401) 222-2694.

Trestle Trail

Connecting the Coventry Greenway on the east, the Trestle Trail extends 10 miles to the Connecticut border and plans are in the works to make this trail an integral part of the East Coast Greenway. Call RI Dept. of Environmental Management, Division of Planning & Development, at (401) 222-2776.

South County Bikeway

Starting at the historic Kingston Station, this 11-mile path will take riders on a scenic tour of the Great Swamp and its amazing wildlife and the village of Peace Dale. Eventually, it will extend to Sprague Park, the Narragansett Town Beach, and the easily recognizable Narragansett Towers and seawall. Call (800) 548-4662.

Woonasquatucket River Greenway

So much is being planned for this greenway! Bring your canoe or kayak, explore restored parks, walk the heritage trail, and bike a 5.7-mile path starting at Waterplace Park in downtown Providence. The Woonasquatucket has recently been designated an American Heritage River. Call Jane Sherman, project director of The Providence Plan, at (401) 455-8880.

Saugutuck River Greenway

Welcome to South County! This seven-mile greenway takes you through the historic villages of Peace Dale and Wakefield to Point Judith. Before it joins Block Island Sound, Tri-Pond Park and Old Mountain Field provide trails. Contact the Saugutuck River Heritage Corridor Coalition at (401) 789-7033.

Resources...

- Books**
- Short Bike Rides in Rhode Island, by Howard S. Lane. The Globe Pequet Press, Chester, CT, 5th Edition, 1996.
- Walks & Rambles in Rhode Island. BackCountry Publications, Woodstock, VT, 2nd Edition, 1996.
- More Walks & Rambles in Rhode Island, by Ken Weber. BackCountry Publications, Woodstock, VT, 1992.
- A Guide to Rhode Island's Natural Places, by Elizabeth Gibbs, Tony Corey, Malia Schwartz, Deborah Grossman-Garber, Carole Jaworski, Margaret Bucheit. Rhode Island Sea Grant, University of Rhode Island, Narragansett, RI, 1995.
- Public Access to the Rhode Island Coast, by Pamela Pogue and Virginia Lee. Sea Grant Advisory Service, University of RI, Narragansett, RI, 1993.
- Atlas of Rhode Island Wildlife Management Areas, by RI Division of Fish, Wildlife and Estuarine Resources. Department of Environmental Management, Providence, RI, 1993.
- Phone Numbers**
- Rhode Island Department of Environmental Management (RIDEM). General Information: (401) 222-6800.
- Division of Parks and Recreation: (401) 222-2632.
- Division of Fish and Wildlife: (401) 222-3075; (401) 789-3004.
- Arcadia Management Headquarters, Hope Valley: (401) 539-2356.
- George Washington Management Hq., Chepachet: (401) 568-2013.
- RI Dept. of Transportation (Bike Coordinator): Call (401) 222-2694, ext. 40284 for your free Rhode Island Cycling Guide.
- Rhode Island Resource Recovery Corp. (Recycling info): (401) 942-1430.
- Private statewide organizations:
- Audubon Society of Rhode Island: (401) 949-6454.
- Management Bay Wheelmen: (401) 435-4012.
- Save the Bay: (401) 272-3540.
- The Nature Conservancy: (401) 331-7110.
- RI Trail Council: (401) 353-3644.
- Intermodal Transportation Information**
- Intra-state Bus Service
- Rhode Island Public Transit Authority (RIPTA)
- Routes serving destinations statewide
- 24 hour Rider information: (401) 781-9400, (800) 244-0444.
- Bike racks are available and bikes are carried for free on all RIPTA buses.
- Interstate Bus Service**
- Bonanza Bus Lines: (401) 751-8800
- Service from New York City, Hartford, Boston, Logan Airport, Cape Cod and other points.
- Bicycles may be carried on Bonanza buses as baggage on a space-available basis. Check with Bonanza for details.
- Greyhound Bus Lines: (800) 231-2222
- Service from Boston, Hartford, New York, and points west.

Rail Connections

Amtrak

Service to Providence and Kingston, RI from Boston, New York, and points south and west.

Reservations: (800) 872-7245

Providence Station: (401) 727-7379

Baggage Number: (401) 727-7388

Bicycles may not be carried on Amtrak Northeast corridor trains, but may be shipped as baggage to certain Amtrak destinations. Check with Amtrak for service availability and cost.

MBTA

Providence to Boston commuter service

Customer service: (617) 222-3200

Bicycles are allowed on MBTA commuter trains and subway cars during off-peak hours by permit. Call the MBTA for details on policies and procedures for obtaining a permit.

Ferries

Block Island Ferry

Interstate Navigation, Inc. (Pt. Judith, RI) (401) 783-4613 (service to Block Island from Pt. Judith, Newport, and Providence)

Prudence Island Ferry (401) 253-9808 (service to Prudence Island from Bristol)

Bicycles are carried on both ferries for a fee.

Air Connections

T.F. Green Airport Warwick, RI (401) 737-8222

Service by major commercial carriers to domestic and international destinations. (Check with individual airlines concerning policies and costs for shipping bicycles as baggage.)



The Southeast Lighthouse, Block Island



Not Just for the Birds

The Audubon Society of Rhode Island invites everyone to walk and hike at 10 locations throughout the state, ensuring free public access to more than 8,000 acres dedicated to preservation.

One of the most remarkable birding areas in North America, Block Island becomes the Fall resting place for over 150 species of migratory birds. Audubon Society programs for both novice and experienced bird watchers each year attract hundreds of enthusiasts.

Long Pond/EI Woods in Hopkinton is a National Registry of Natural Landmarks site with trails on 218 acres filled with rhododendron and hemlock that are connected to an extensive hiking system. Nestled on the eastern edge of the Sakonnet River in Tiverton, the Emilie Ruecker Wildlife Refuge provides habitats for wading birds, Osprey, and a variety of song birds. These are just two samples of the Society's open spaces, which are dotted throughout the state. For information, call the Society at (401) 949-5454.



The Rhode Island Greenways Council was established by the Rhode Island General Assembly in 1995 to coordinate state greenway efforts, assist local governments and private groups in greenway creation, and provide information to the public on the availability and usage of greenways in Rhode Island. Its members include the Departments of Administration, Environmental Management, and Transportation, the RI Economic Development Corporation, and representatives of the cities and towns and the public. The Council's vision is to have an interconnected greenway system of over 700 miles of trails for the public to enjoy. Visit the State Planning Council's Web site at www.planning.state.ri.us.

Funding for production of this map was provided by grants from the U.S. Department of Transportation, Federal Highway Administration and the Rhode Island General Assembly.

Large type text available for the visually impaired. Call (401) 222-6479 for larger type copy.

For tourism information call the Rhode Island Tourism Division at (800) 556-2484 or visit their Web site at www.VisitRhodeIsland.com.

