

Biking Along the Waterways

During the summer of 2000 students of North Brooklyn Recycle-A-Bicycle biked to explore land use along the Brooklyn waterfront.

Environmental experts guided us through sites including a sewage treatment plant, factories, and waterfront parks. We even found the printer who prints NYC subway maps. We visited community activist groups working to clean up the waterfront. Look inside to see what else we discovered and what you can do.



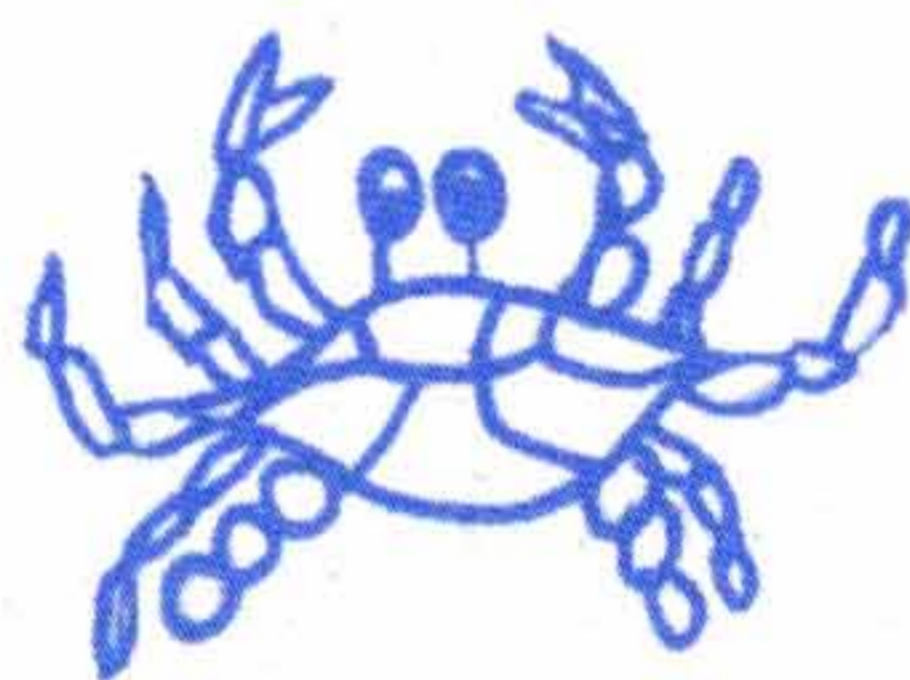
Green Mappers explore the Brooklyn Bridge Park site.



Mappers draw in the beautiful vacant waterfront lot at North 7th St.



Mappers launch a Whitehall Rowing Gig with Floating the Apple.



Water Pollution Prevention Solutions

- Conserve water by taking shorter showers.
- Never pour motor oil or other auto fluids down a drain or sewer.
- Use phosphate-free soaps and detergents.
- Do not buy or use hazardous products.
- Do not flush plastic items down toilets or discard them carelessly.
- Avoid buying products that have excess packaging.
- Use rechargeable batteries.
- Help clean up the waterfront; put litter in wastebaskets.

Water Facts

We take our clean drinking water for granted although our watershed is a precious resource that needs protection. Each day water mains distribute about 1.2 billion gallons from upstate reservoirs to 9 million people.

The Clean Water Act is the law affecting water pollution. In 1972, Congress set a goal to make all rivers, lakes, and streams "fishable and swimmable" by 1985.

All dischargers of pollutants into streams, lakes, and rivers are required to have state permits. More than one billion gallons of treated sewage are poured into the East River daily. Animals can be found around its old piers and platforms. This 35-foot deep waterway is used as a shipping channel and by fish that migrate to Long Island Sound.

Animals Affected by Water Pollution

- | | | |
|------------------|---------------|-------------------|
| ◆ Horseshoe crab | ◆ Cormorant | ◆ Black crappie |
| ◆ Blue claw crab | ◆ Alewife | ◆ Shrimps |
| ◆ Bluefish | ◆ Fluke | ◆ Snapping turtle |
| ◆ Blue mussels | ◆ Grubby | ◆ Green frog |
| ◆ American eel | ◆ Sea squirts | ◆ Clams |

Map Makers: Angeline Andreu, John Green, Joseph Green, Mohammed Rashel, Joseph Rosa
Student Teacher Assistants: David Almeida, Norma Chia, Amanda Rodriguez

Summer Project Coordinator: Beth Ferguson

Production: Beth Ferguson, Betsy Kissam

Map Consultants / Volunteers: Wendy Brawer - Green Map System (www.greenmap.org); Irene Van Slyke; Ed Fishkin, M.D.; Ira Perelson; Karen Overton; Browen Mauch; David Sterns - Brooklyn Bridge Park Coalition; David Sapphire - Council on the Environment; Samara F. Swanston - Watch Person Project; Carter Craft - Metropolitan Waterfront Alliance; Frank Ferone - Red Hook Water Control Plant; Deven Lithographers, Inc.

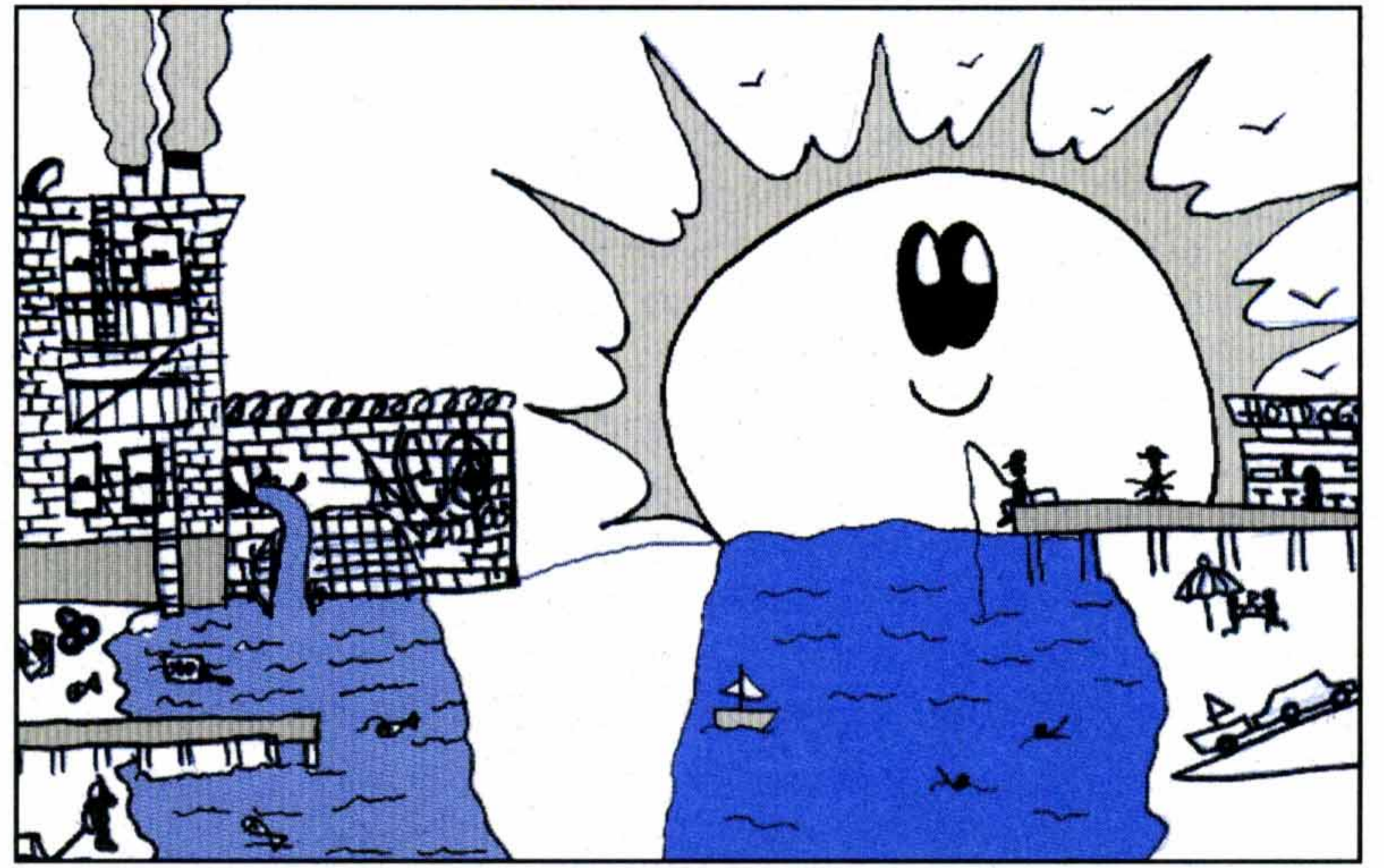
Schools: 850 Grand St Campus: School for Legal Studies and Progress H.S.; Automotive H.S.; Murray Bergrtraum H.S.; H.S. for Environmental Studies; Harry Van Arsdale H.S.; I.S. 318



Summer programs funded by the Citizens Committee for NYC
 Printing sponsored by Independence Community Foundation and Metropolitan Waterfront Alliance

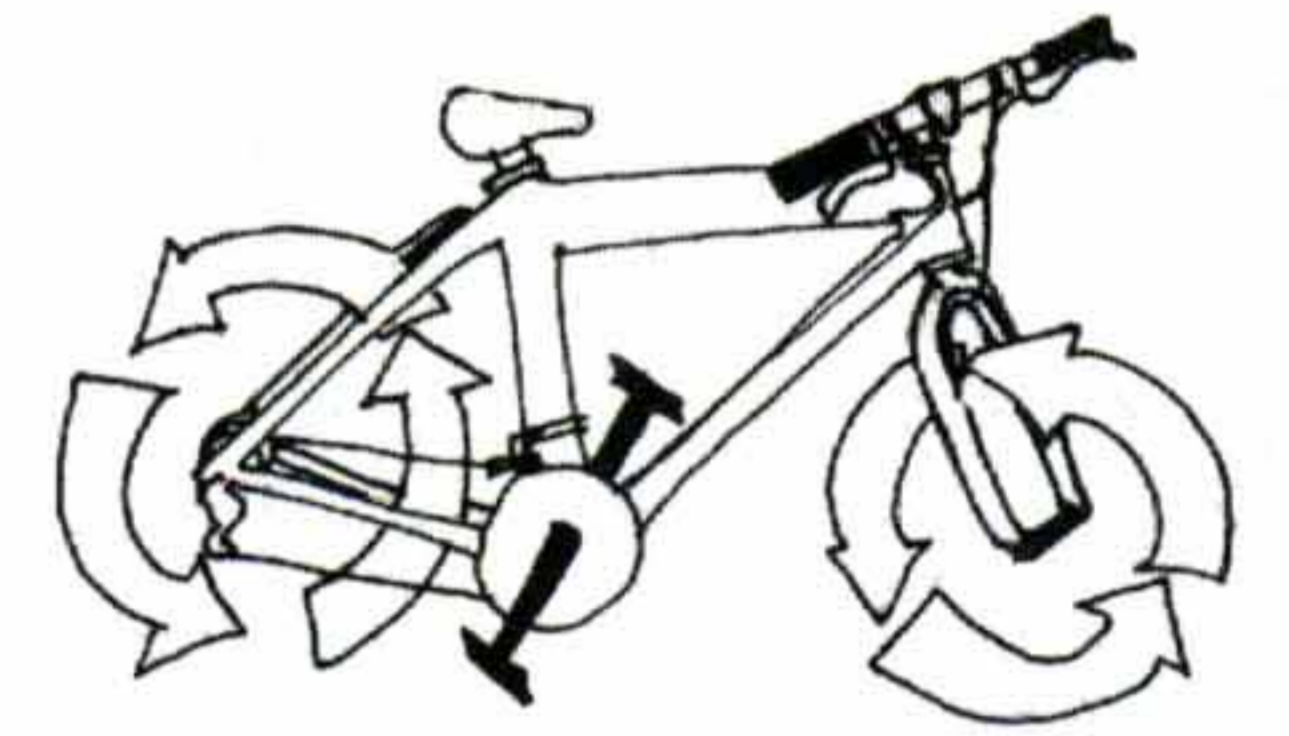
Stop Fronting

Discover Brooklyn's Real Waterfront with



North Brooklyn Recycle-A-Bicycle

Recycling and Biking by Kids for New York City's Environment



Bike Cue Sheet - best on the weekends

Start at 850 Grand St. H.S. corner of Bushwick Ave.

L Grand St. 1 block

L Maujer St. 3 blocks

R Manhattan Ave. 30 blocks

to Newtown Creek,

R Commercial St. 3

blocks

L Franklin St. 2 blocks

R Freeman St. 1 block

L West St. 11 blocks

L Quays St. 1 block

R Franklin St. 3 blocks

R Kent Ave. 44 blocks (N12th -

N7th - Open Space, Kent &

Grand - Grand Ferry Park,

Domino Sugar Factory)

R Williamsburg St. 1 block

R Flushing Ave. 7 blocks

L Hudson St. 2 blocks

L York St. 8 blocks

R Front St. 1 block, pass by

334 Furman St. - Brooklyn

Bridge Park Coalition

South on Furman St. 3/4 mile

R Kane St. 1 block

L Van Brunt St. 18 blocks, to

Beard St. Warehouses and

launch for Floating the Apple

and Brooklyn Historic Railway

Trolley Barn and newly laid tracks

Return North on Van Brunt St.

L Coffey St. 2 blocks to Louis

Valentino Pier with incredible view of

Statue of Liberty

Backtrack on Coffey St. 2 blocks

L Van Brunt St. 15 blocks

R Union St. 2 blocks

R Henry St.

L Carroll St. over historic

drawbridge 6 blocks

L 3rd Ave. 13 blocks cross

Flatbush Ave. continue on

Lafayette Ave. 8 blocks

L Carlton Ave. 2 blocks

R Willoughby Ave. 16 blocks

L Skillman St. 3 blocks

R Flushing Ave. 1 block

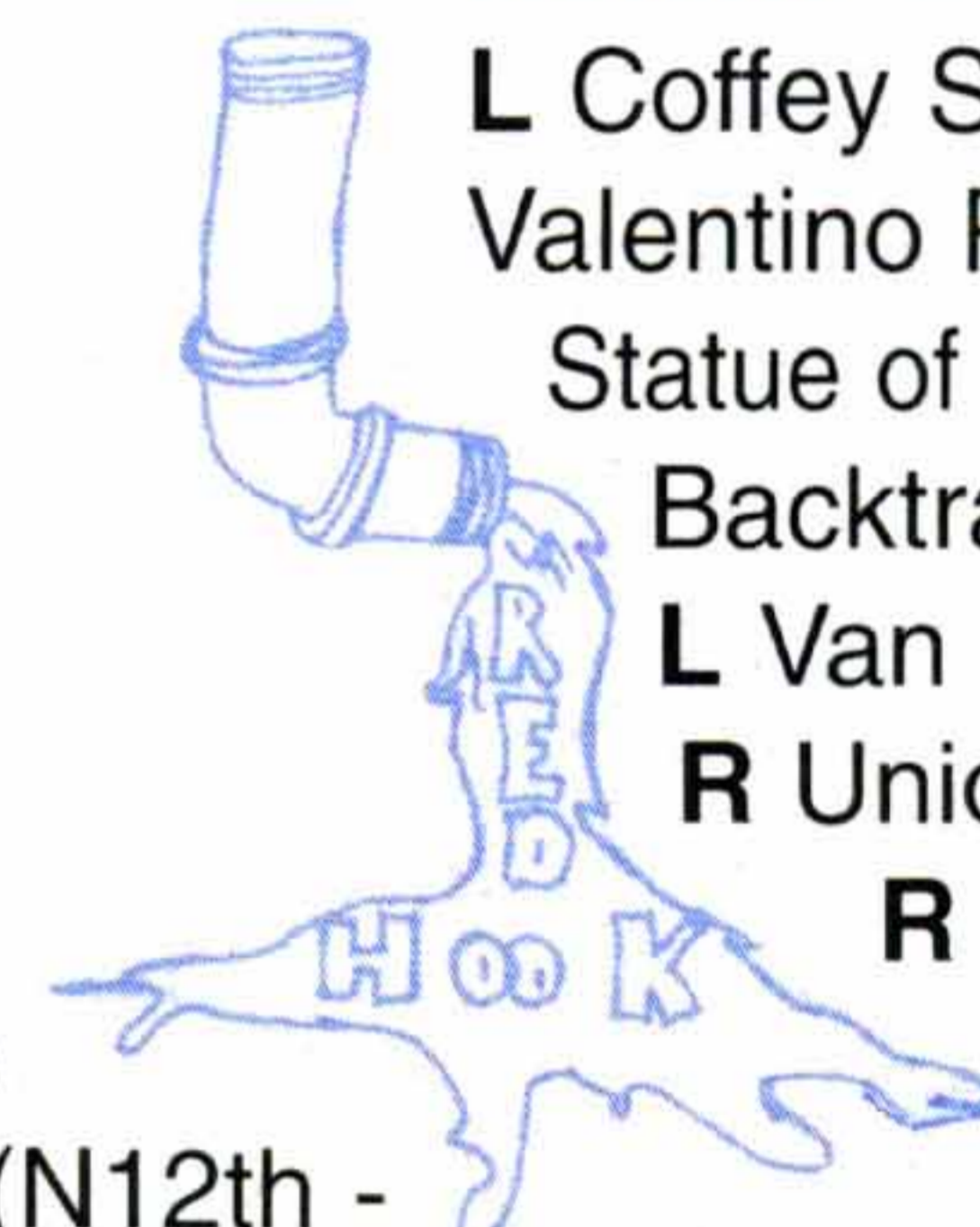
L Bedford Ave. 1 block

R Wallabout 6 blocks

L Lorimer St. 4 blocks

R Scholes St. 5 blocks

L Bushwick Ave. 4 blocks



North Brooklyn Recycle-A-Bicycle promotes bicycling as transportation, recreation and health by recycling bikes. Our Green Maps explore community gardens, city waste, and the waterfront. Experienced mechanics teach kids repair and maintenance to put abandoned bikes back on the street. Our Earn-A-Bike program gives young people an opportunity to earn a bike, and join in group rides.

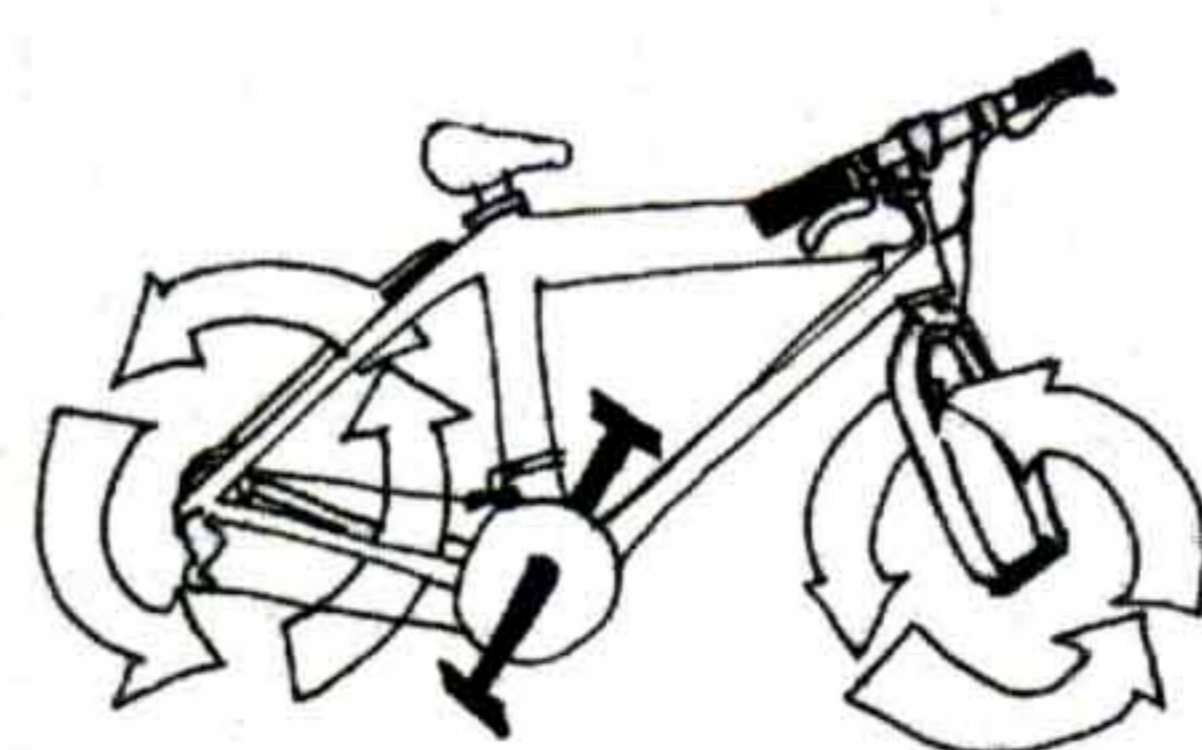
North Brooklyn Recycle-A-Bicycle

located at **850 Grand St. Campus H.S.**

mailing address:

208 Bergen St.

Brooklyn, NY 11217



Bike along the Waterfront To See a Flood of Cool Places



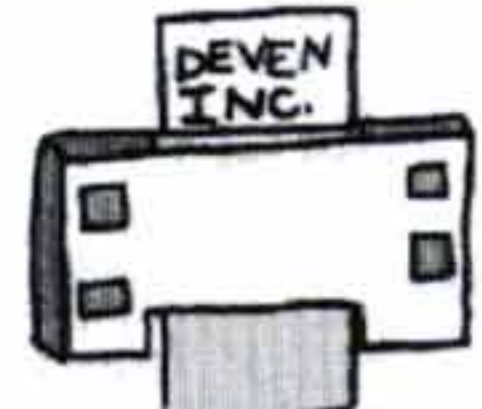
1. Newtown Creek

In the 1900s Newtown Creek, surrounded by factories, was used for transporting goods. With Council on the Environment, we tested the salinity, oxygen, and pH of the water. Our ideas to clean up the Creek include dredging and stopping the pollution from nearby industry and the leaks from underground oil containers. Newtown Creek is still one of the most polluted waterbodies in the city.



2. Greenpoint Lumber Yard

Founded a century ago, the yard has been pinpointed by the Rainforest Action Network because lumber from Colombian rainforest trees is being stored there for use in construction. The owner has expressed interest in selling the property and the community would like the site to be open to the public.



3. Deven Lithographers

We toured the Deven web press which produces magazines and NYC subway maps. The left-over chemicals go into 55-gallon drums and are reused elsewhere for solvent and detergent. Aluminum image plates are also reused.



4. Watch Person Project

Samara F. Swanston is the director of this toxic watch program at 113 Berry St. Her group provides help and support for community leaders in their struggles in Greenpoint and Williamsburg. The project prepares residential facility, health, and environmental protection information to prevent environmental racism and injustice. For details, call 718-384-3339.

5. Murals

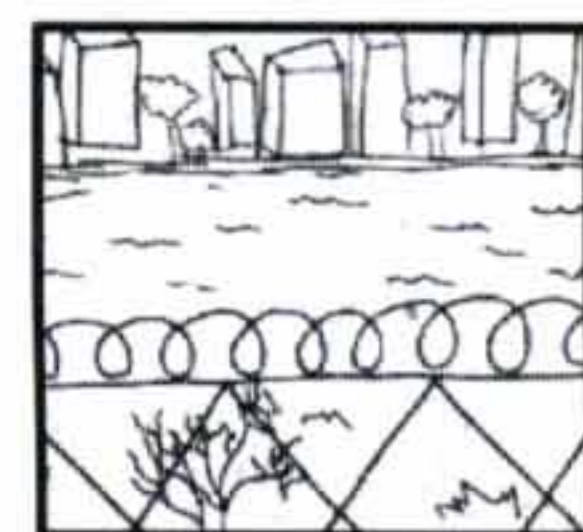
We found lots of interesting murals painted by different artists. Our favorite was on Grand St. across from 850 Grand St. High School.

6. Grand Ferry Park

Located at Kent and Grand streets. Before there were bridges, this is where you took a ferry to Manhattan. Great view.

7. Domino Sugar Factory

Domino Sugar, the last sugar factory in the City, was bought by Tate & Lyle, one of the largest sugar companies in the world. The workers have been on strike for 13 months and counting. The factory's new owner does not want the workers to have a contract with the local union. Support the strike; don't buy Domino sugar!!!



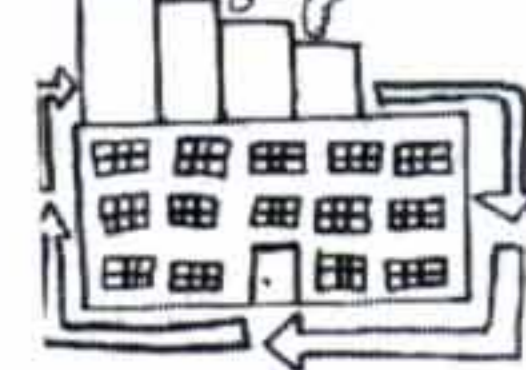
8. North 7th Street Vacant Lot

Fishermen, artists, and others who love the river use this waterfront lot. The State and New York University bought this lot from the City and propose building a student sports facility. We think this lot should be left wild and open for all to enjoy.



9. Red Hook Water Pollution Control Plant

Frank Ferone, one of 120 workers, guided us through the plant. The WPCP treats 30 to 60 million gallons of sewage per day and serves 262,000 people in Red Hook alone. It smells really bad. The sewage goes through cleaning phases before it is released into the harbor. Workers use gravity to get the water to the plant, chemistry to help clean the water, and biology to almost fully clean it. For information or to visit, call 718-935-1507.



10. Electric Power Plant

The New York Power Authority plans to install a gas-powered, electric-generating turbine on River St. in Williamsburg, between N 1st St. and Grand Ave. The plant would be a nuisance to surrounding communities, because it will increase noise pollution, contaminate the air, and be an eyesore on the waterfront.



11. The Brooklyn Bridge Park Coalition

This coalition of 60 environmental and neighborhood groups is working to build a 75-acre park along the waterfront between Atlantic Ave. and Jay St. The park will have bike paths; people will be able to play, rest, eat, boat or just relax and view Manhattan. To get involved in making it a reality, call 718-802-0603.

12. Waterfront Museum

This museum, housed in a 1914 barge, is the only one of its kind still floating. It operates as a showboat with cultural and arts programs. www.waterfrontmuseum.org



13. Floating the Apple

On the last day of our summer program we bicycled to Red Hook to meet with Mike Davis of Floating the Apple. We launched a Whitehall rowing gig (six-person rowboat), learned how to row, and explored the harbor. For details, call 212-564-5412. www.floatingtheapple.org



14. Green Map Office

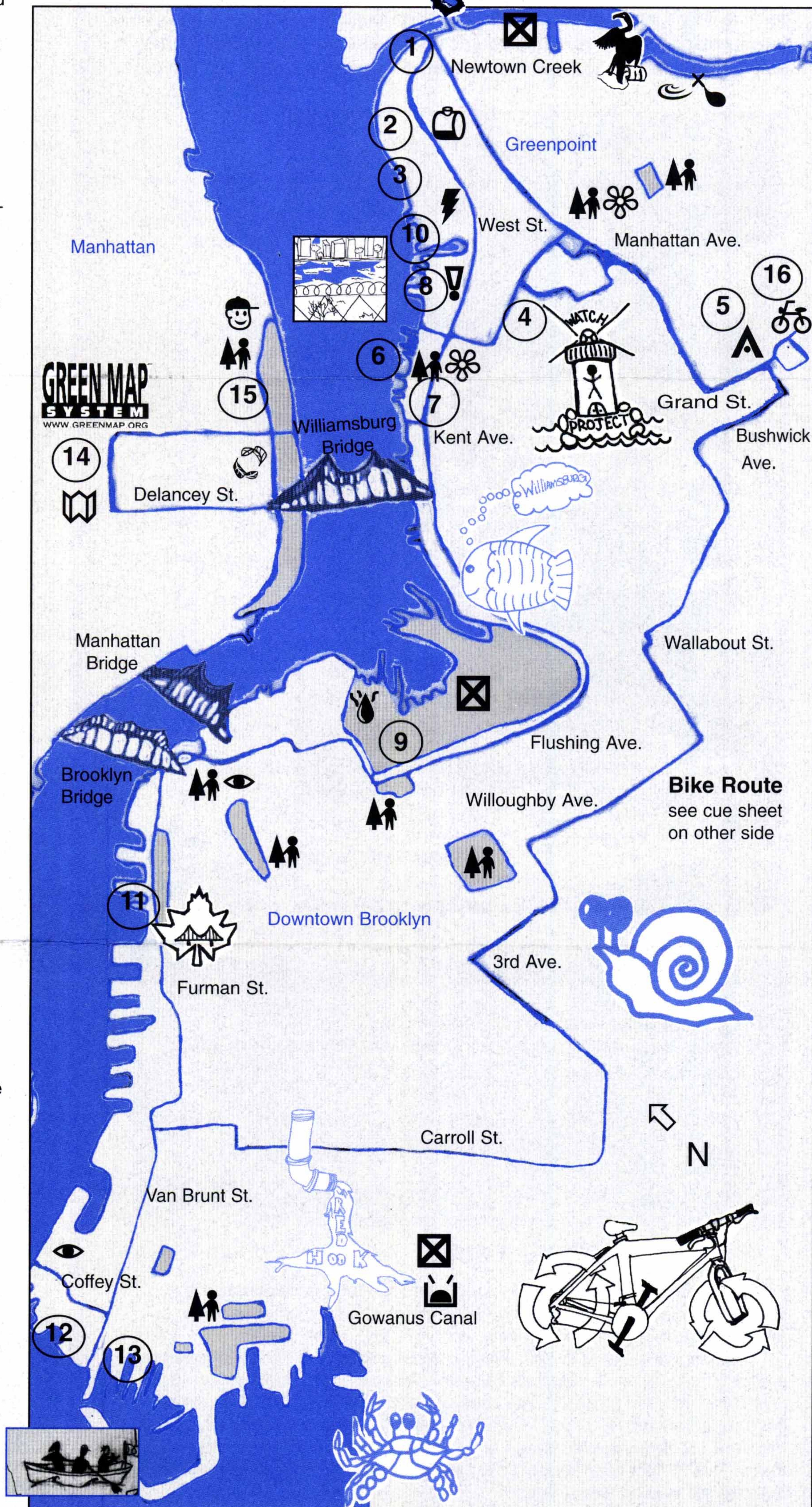
The first NYC Green Map was created here. We learned how the green map icons were made and how Recycle-A-Bicycle joined this global project. For information, call 212-674-1631; www.greenmap.org

15. East River Park

In Manhattan, stop here for a picnic. Great views of the Brooklyn waterfront. The East River bike path passes through. Visit the community compost center, 212-420-0621.

16. North Brooklyn Recycle-a-Bicycle

Buy a recycled bicycle and bike parts and accessories at our shop. Hours: Sat. 10:30 - 2:30pm.; 850 Grand St. High School Campus in Williamsburg; 718-387-2800 x 196. For program/ride information, call 718-852-5668; www.recycleabicycle.org



Green Map Icon Key

Green Map Icons copyright Modern World Design 1999

- | | | |
|------------------------|------------------------|------------------------------|
| ★ Special Tree | ▲ Mural | ⊕ Significant organization |
| ⚡ Protest point | 🌳 Park | 🌊 Water feature |
| 📍 Opportunity site | 🚲 Bike site | 🔊 Noise pollution source |
| 🗑️ Waste dump | 👁️ Great view | 🏭 Wastewater treatment plant |
| 🌊 River-front park | ♻️ Compost | 📦 Underground storage tank |
| 👶 Youth friendly site | 🌸 Garden | 🚰 Oil spill |
| ⚡ Electric power plant | 📖 Green maps available | ☒ Contaminated site |

Water Resource Organizations

- Metropolitan Waterfront Alliance** ⊕ 🌊 This network of more than 300 organizations in New York and New Jersey works together to revitalize our waterfronts and waterways. Visit www.waterwire.net; subscribe to the free weekly electronic newsletter (info@waterwire.net); request waterfront maps or call 800-364-9943.
- Neighbors Against Garbage of Greenpoint/Williamsburg** 718-384-2248
- Brooklyn Center for the Urban Environment** 718-788-8500
- Hudson River Sloop Clearwater** 914-454-7673
- New York Waterway** 800-533-3779 **Staten Island Ferry** 718-815-BOAT
- Council on the Environment** 212-788-7930 **East River Crew** 212 427-3956