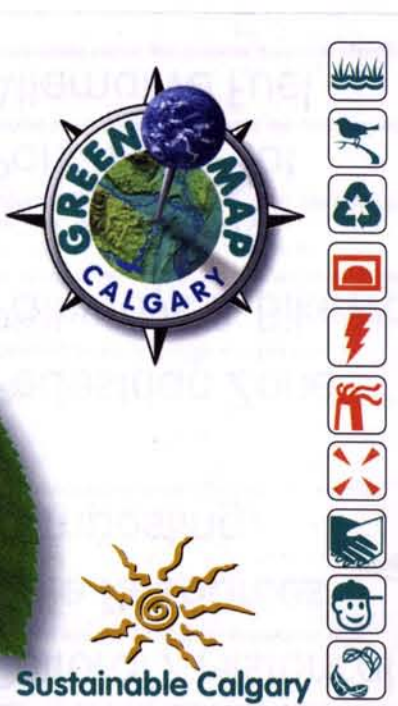


CALGARY GreenMap 2000-2001

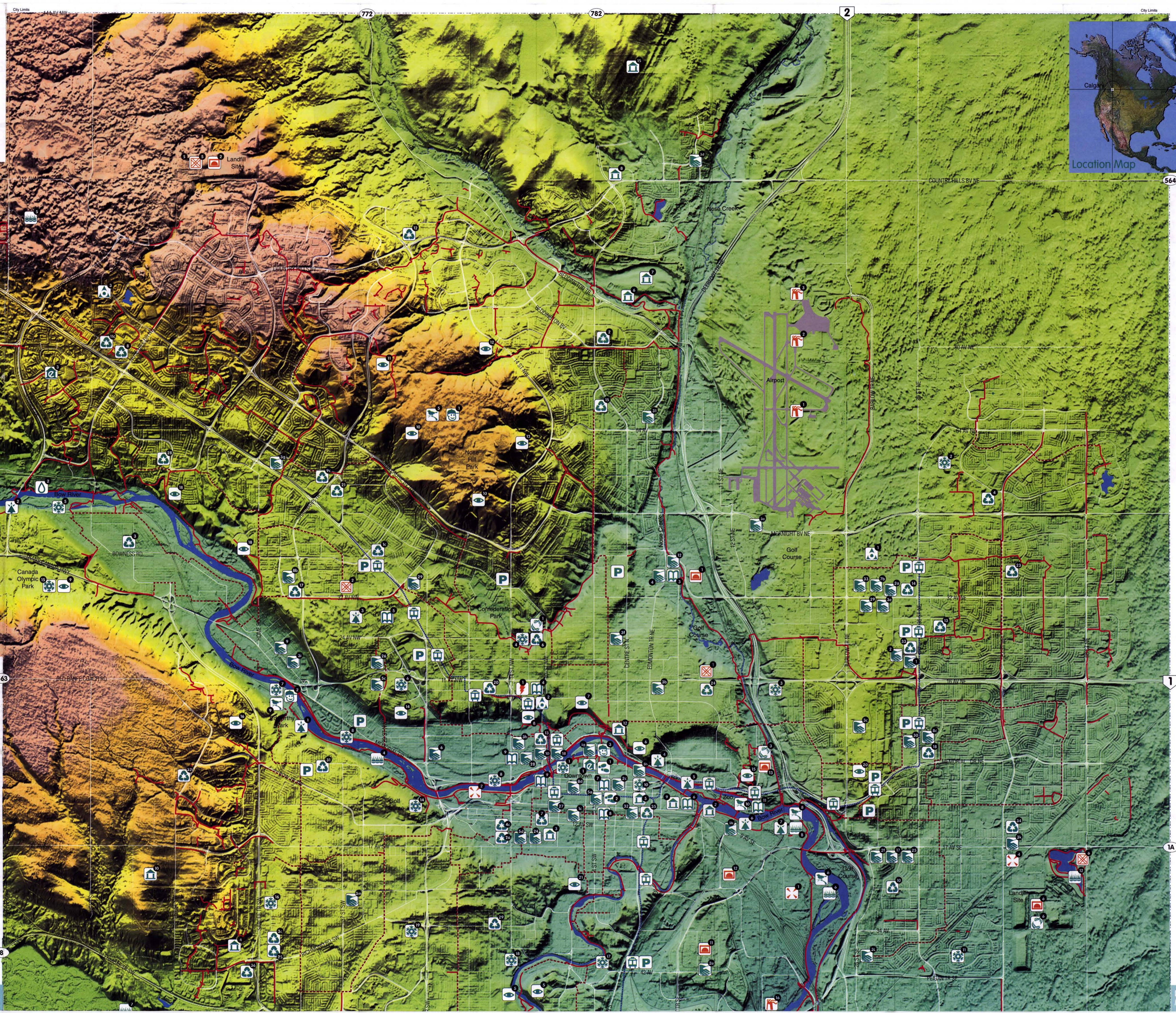


GREEN MAP SYSTEM
Green Map System
This map is part of the award-winning global Green Map System. Find out more about the world-wide collection of local Green Maps, the GMS Icons and ways to participate at:
website: greenmap.org
email: info@greenmap.org
mail: (PO Box 249, NYC 10002 USA)
FAX: (1 212) 674 6206

Sustainable Calgary
Sustainable Calgary is a citizen initiated society with the mission of promoting, encouraging, and supporting community-level actions and initiatives that move Calgary toward a sustainable future. We believe that Calgary is a great place to live, work and play and we want it to always be this way. Our focus is on initiatives, like the Green Map, that encourage action that will move our city towards greater sustainability.

Calgary Green Map
Calgary's Green Map is intended as an education, advocacy and planning tool for community groups, governments, and the private sector. The map includes icons to highlight Calgary's environmentally friendly and not-so-friendly sites.
The map has unlimited uses, including: a teaching tool in schools, a starting point for environmental discussions, an environmental inventory, a resource guide, and even a catalyst for influencing environmental policies. Calgary's Green Map is distributed free of charge to maximize exposure and education throughout the city and around the world. Find out more at:
website: telusplanet.net/public/sustcalg
phone: (403) 270-0777

DUPLICATE MAP AREA TIP: tape two maps together to make one large display map



DUPLICATE MAP AREA

Calgary GreenMap Icon Key:

- Wetlands**
 - 1: Birdweald
 - 2: Experimental Constructed Wetlands
 - 3: Sheppard Wetlands
 - 4: Laundry Gardens
 - 5: Royal Oak
 - 6: Inglewood Bird Sanctuary
 - 7: Discovery Ridge
 - 8: Peano Estates
 - 9: Wesshead Flats
 - 10: Carburn Park
- Bird / Wildlife Viewing Sites**
 - 1: Fish Creek Park, West Side of Park
 - 2: Fish Creek Park, East Side of Park
 - 3: South Glenmore Park, Access off 90 Ave & 24 St SW
 - 4: North Glenmore Park, Access at 37 St SW or at St end of Crowchild Tr SW
 - 5: Nose Hill Park, 64 Ave & 14 St NW (Access at 19 St & John Laurie Blvd NW, John Laurie Blvd access from Brindos Dr NW, Shaganappi Tr at end of Edgemont Blvd NW, Berkeley Gate & 14 St NW)
 - 6: Carburn Park, Access off Rivervalley Dr at Riverview Dr SE
 - 7: Beaverdam Flats Park, Access off 66 Ave at Lynnview Dr SE
 - 8: Inglewood Bird Sanctuary, 2425 9 Ave SE
 - 9: Edworthy Park, via Edworthy St SW or Montgomery View NW
 - 10: Calgary Zoo, Zoo Road off 12 St E
- Special Trees**
 - 1: Douglas Firs, Edworthy Park
 - 2: Douglas Firs, West end of Bonness Park at Stoner Tr
 - 3: Convocation Trees, West edge of University of Calgary
 - 4: Uniquely Tilted Tree, Meredith Rd near Edmonstone
 - 5: Memorial Poplars, Meredith Drive, 10 St NW & Centre St
 - 6: Colonel Macleod's Daughter's Trees, Planted at the Cross House
 - 7: Brewery Gardens, 17 Ave & 14 St SE
 - 8: Trembling Aspens, Wesshead Natural Area (90 Ave & 24 St)
- Scenic Vistas**
 - 1: Fish Creek Park SE, Access at end of Bow Bluff Tr SE, Park Ridge Dr SE, & Bonshaw Rd SE
 - 2: Fish Creek Park SW, Access off MacLeod Tr S, Canyon Meadows Dr SW, & Woodpath Rd SW
 - 3: South Glenmore Park, Access at 90 Ave & 24 St SW
 - 4: North Glenmore Park, Access at 37 St SW or at St end of Crowchild Tr SW
 - 5: Sandy Beach, Access at 14 St & 50 Ave
 - 6: Prince's Island Park, 2 Ave & 1st St or Memorial Dr & 3 St
 - 7: Viewpoint over Sunnyside, Along Concession Rd & 9 St NW
 - 8: Burns Memorial Park, Access off SAT 51 NW
 - 9: Canada Olympic Park, 68 Canada Olympic Rd NW
 - 10: Nose Hill Park, (Access at 19 St NW (NW corner), Edgemont Blvd NW, Berkeley Gate & 14 St NW)
 - 11: Nose Hill Park, Shaganappi Tr, at End of Edgemont Blvd NW
 - 12: Nose Hill Park, Berkeley Gate & 14 St NW
 - 13: Nose Hill Park, 64 Ave & 14 St NW
 - 14: View point overlooking Parkdale, St Andrews Hills overlooking Parkdale along Toronto Cr NW
 - 15: Tom Campbell Hill, Overlooking Zoo
 - 16: Broadacast Hill, Patina Point SE
 - 17: Rockyview Hospital, East Side of Glenmore Reservoir SW
 - 18: Silver Springs, Silverview Rd at Edgemont Blvd NW
 - 19: Lynwood Ridge, Lyander Dr SE
 - 20: East of Barlow Tr, 10 St NE
 - 21: Glenloch Hill, East Gray Cr & Hillcrest Ave SW
- Winter Activity Sites**
 - 1: Pathway - Downtown Loop, Bhen 14 St Bridge & St Patrick's Island
 - 2: Prairie Winds Park, 54 Ave & Castleford Blvd NW
 - 3: Deerfoot Athletic Park, 15 St & 14 Ave NE
 - 4: Confederation Park, 3204 Collingwood Dr NW
 - 5: Bonness Park, 49 Ave NW
 - 6: St Andrews Heights, South of 16 Ave & University Dr NW
 - 7: Edworthy Park, via Edworthy St SW or Montgomery View NW
 - 8: Pathway, 14 St to Home Rd NW (Bow River north bank)
 - 9: Carburn Park, Riverview Dr SE
 - 10: Olympic Plaza, 7 Ave & 8 Ave 1 St - 2 St SE
 - 11: Erin Woods Park, Ermevoo Dr SE
 - 12: Fish Creek Provincial Park, Bobbottom Trail to Sikome Circle SE
 - 13: Maple Ridge Golf Course, 1240 Maple Glade Dr SW
 - 14: Shaganappi Point, 1200 26 St SW
 - 15: Canada Olympic Park, Canada Olympic Road SW
 - 16: Glenloch Hill, 45 St & 25 Ave SW
 - 17: Stanley Park, 42 Ave SW
 - 18: River Park, 144 St south of 38 Ave SW
 - 19: Rockwood Park, SW corner of Crowchild Tr & 33 Ave SW
 - 20: Trail System, North-South Glenmore Park
 - 21: Community Operated Lake, Midnapore
- Drinking Water Sources**
 - 1: Glenmore Water Treatment Plant, 56 Ave SW - east of 16 St
 - 2: Bearspaw Water Treatment Plant, Bearspaw Glen Rd NW
- Recycling Depots**
 - 1: Acadia, 389 Heritage Dr SE
 - 2: Beddington, 8120 Beddington Blvd NW
 - 3: Bowness, 1827 43 Ave NW
 - 4: Castleford, 55 Castleford Blvd NE
 - 5: Chinook, 8455 Macleod Tr SW
 - 6: Confederation Park, 2627 10 St NW
 - 7: Connaught, 813 11 Ave SW
 - 8: Crowfoot, 89 Crowfoot Cr NW
 - 9: Deer Valley Co-op, 1221 Canyon Meadows Dr SE
 - 10: Dover, 2707 28 St SE
 - 11: Glenmore Landing Services, 1600 20 Ave SW
 - 12: Hampton Co-op, 1000 Hampton Dr NW
 - 13: Hillhurst/Sunnyside Community, 1320 5 Ave NW
 - 14: Horton Square Salfeway, 3550 32 Ave NE
 - 15: Huntington Hills Zellers, 7020 4 St NW
 - 16: Lakewood Plaza, 6449 Crowchild Tr SW
 - 17: Market Mall, 3055 Shaganappi Tr NW
 - 18: Marlborough Mall, 500 Block 36 St NE
 - 19: Midnapore/Sunnyside, 140 Midpark Way SE
 - 20: North Hill Mall, 1901 16 Ave NW
 - 21: Northland Village Shoppes, 5111 Northland Dr NW
 - 22: Ogden Salfeway, 7740 18 St SE
 - 23: Hillhurst/Sunnyside Community, 5401 Temple Dr NE
 - 24: Hillhurst, 10 Ave & Russell Road NE
 - 25: Richmond Square, 3915 51 St SW
 - 26: Scarborough Community, 15 Ave & 16 St SW
 - 27: Shawnessy Salfeway, 70 Shawville Blvd SW
 - 28: Silver Springs Plaza, 5720 Silver Springs Blvd NW
 - 29: South Calgary Community, 3130 16 St SW
 - 30: Southtown Salfeway, 11011 Bonaventure Dr SE
 - 31: Spruce Cliff Plaza, 3400 Block of Spruce Dr SW
 - 32: Strathcona Square, 555 Strathcona Blvd SW
 - 33: Sunridge Mall, 2525 36 St NE
 - 34: Trans Canada Mall, #300 - 1440 52 St SE
 - 35: Victoria Park (Coop), 123 11 Ave SE
 - 36: West Hills Salfeway, 200 Stewart Green SW
 - 37: Woodbine Salfeway, 2555 Woodview Dr SW
- Energy Generating Facilities**
 - 1: SAIT Co-Gen Facility, 1301 16 Ave NW
- Emission Sites - Air, Land, and Water**
 - 1: Hudson General Aviation Services Ltd, 8005 22 St, Airport NE
 - 2: Canadian Airlines, 2000 Airport Rd NE
 - 3: Air Canada, Calgary International Airport NE
 - 4: Bow River (approximately 400 Storm Water Outfalls along river)
 - 5: Vlastakis Products Canada Ltd, 3220 59 Ave SE
 - 6: Crown Cork & Seal Canada Inc, 4455 75 Ave SE
 - 7: Carpenter Canada Limited, 5800 36 St SE
 - 8: Van Waters & Rogers Ltd, 4220 78 Ave SE
 - 9: Air Products Canada Ltd, 7905 51 St SE
 - 10: APEL, Extrusions Limited, 7920 36 St SE
 - 11: Canam Steel Works, 223 53 Ave SE
 - 12: Coulter Radiator, 7029B Farrell Rd NE
 - 13: Western Co-operative Fertilizer Limited, 11111 Barlow Tr SE
 - 14: Champion Technologies Ltd Plant, 6550 30 St SE
 - 15: Travis Chemicals, 3124 54 Ave SW
 - 16: University of Calgary, 2000 University Way NW
 - 17: Fish Creek Wastewater Treatment Plant
 - 18: Canadian Parks & Wilderness Society, #306, 319 10 Ave SW
 - 19: Sustainable Calgary, 201 1225a Kensington Rd NW
 - 20: Fish Creek Environmental Learning Centre, (24 St SE)
 - 21: Calgary Zoo
- Remediation Sites**
 - 1: Former Inglewood Refinery, Near Bird Sanctuary (at end of 9 Ave SE)
 - 2: Canada Creosote, 2024 Pumphouse Ave SW
 - 3: Former Imperial Oil Refinery, 5305 Ogden Rd SE
 - 4: Hub Oil Refinery Site, 5805 17 Ave SE
- Eco Kid Friendly Sites**
 - 1: Nose Hill Environmental Park, Bhen 14 St & Shaganappi NW
 - 2: Edworthy Park, Edworthy St W at Bow River
 - 3: Eau Claire Water Park, 2 St & Riverfront Ave SW
- Eco Buildings**
 - 1: Carterra Tower, 400 3 Ave SW
 - 2: SMED, 10 SMED Lane SE
 - 3: Alberta Sustainable House, 921 Scoufield Dr NW
- Cultural / Historical Sites**
 - 1: Glenmore Water Plant, 300 1600 14 St SW
 - 2: The Deane House, 806 9 Ave SE
 - 3: Loughheed House, 707 13 Ave SW
 - 4: Signal Hill Battalion Numbers, Sarcee Rd & Richmond Rd SW
 - 5: Historical City Hall, 704 Macleod Tr SE
 - 6: Sandstone Quarry, Nose Creek Park at Beddington Tr N
 - 7: Glacier Erratic, Nose Creek Park at Beddington Tr N
 - 8: Glacier Erratic, Country Hills Blvd at Panorama Hills Wy N
 - 9: Fort Calgary, 750 9 Ave SE
 - 10: Glacier Erratic, 17 Ave SW at 69 St SW
 - 11: Glacier erratic, Marquis of Lorne Tr W of 37 St SW
 - 12: Old Electric Trolley Line, (West of Centre St, north of bridge)
 - 13: Historical City Hall, 704 Macleod Tr SE
 - 14: Fish Creek Park Interpretive Centre & Rancho House
 - 15: Glacial scar marks in foothill terrain
- Composting Sites**
 - 1: Confederation Park, 7 St & 30 Ave NW
 - 2: South Glenmore Park, Access off 90 Ave & 24 St SW
 - 3: Calgary Zoo, St George Dr NE (North Parking lot)
 - 4: Parkdale Community Centre, 14550 Parkdale Blvd SE
 - 5: Spynhill Landfill, 112 Ave NW
 - 6: East Calgary Landfill, 66 St & 17 Ave SE
 - 7: Sheppard Landfill, 52 St & 1145 Ave SE
- Alternative Fuel Sites**
 - 1: ATCO Yard, 3055 37 Ave NE
 - 2: ATCO Yard, 1052 10 St NW
 - 3: ATCO Yard, 500 Crowfoot Cr NW
 - 4: ATCO Yard, 383 Midpark Cr SW
- Pedestrian Zones**
 - 1: Stephen Ave Mall, 8 Ave SW (btwn 1 St SE & 3 St SW)
 - 2: Barclay Mall, 3 St SW (btwn 9 Ave & 2 Ave SW)
- Green Businesses**
 - Internet: Universal Elements Company, Wabata Dr NW
 - 1a-c: Scott Wear Ltd, (a) 1826 36 St NE, (b) 3028 30 Ave NE, (c) 1701 11 Ave SW
 - 2a-g: Salvation Army, (a) 1826 36 St NE, (b) 3028 30 Ave NE, (c) 1701 11 Ave SW, (d) 9919 Fairmount Dr SE, (e) 916 42 Ave SE, (f) 3012 17 Ave SE, (g) 2880 Glenmore Tr SE
 - 3a-g: Mohawk Gas Stations, (a) 1530 McNight Blvd NE, (b) 401 16 Ave, (c) 2504 7 Ave, (d) 790 Coventry Dr, (e) 3400 32 Ave NW, (f) 2323 Centre St, (g) 301 5065 Dalhousie Dr, (h) 414 14 St, (i) 4639 Bonness Rd SE, (j) 910 98 Ave, (k) 5505 17 Ave, (l) 406 26 St SW, (m) 3500 28 Ave, (n) 10241 E
 - 4: Waste-In-Not Shop, 3811 Edmonston Tr NE
 - 5a-h: Good Earth Call's, (a)119 8 Ave W, (b)1212 9 Ave SE, (c) Foothills Hospital, (d) 1502 11 St SW, (e) Glenmore Landing, (f) Rockyview Hospital, (g) Eau Claire, (h) Central Library
 - 6a-e: Value Village, (a)104 58 Ave SE, (b) 3405 34 St NE, (c) Body Shop, (d) Chinook, (e) Market Mall, (c) Marlborough, (d) Eaton & (e) South Centre
 - 9: Education Funding for the Children of Alberta Society, 4704 Bonness Rd NW
 - 10: Sunnyside Market, #310, 338 10 St NW
 - 11: Palliser Hotel, 133 9 Ave SW
 - 12: Organic Express
 - 13: Calgary Pick Your Part, 8600 Barlow Tr SE
 - 14: Women in Need Store, Bay B, 1919 31 St SE
 - 15: Bow Chinook Bunter Community, Carpenters Hall, 301 10 St NW
 - 23: Hempurton, 9624 17 Ave SW
 - 24: Snopceps, 924C 17 Ave SW
 - 25: Salvation Army
 - 26: Cornucopia Market, Stadium Shopping Center
 - 27: Mountain Equipment CO-OP, 830 10 Ave SW
 - 28: Mountain Sport Exchange, 1249 Kensington Rd NW
 - 29: Arcant Paints, 2770 32 Ave SE
 - 30: IKEA, 605 98 St NE
 - 31: Interfaith Thrift Store, 6672 4 St NE
 - 32: The Store, #9, 3620 29 St NE
- Landfill Sites**
 - 1: Spring Gardens, East of 36 Ave NE at 32 Ave Connector
 - 2: Spy Hill Sanitary Landfill, 69 St & 112 Ave NW
 - 3: East Calgary Sanitary Landfill, 68 St & 17 Ave SE
 - 4: Sheppard Sanitary Landfill, 52 St & 114 Ave SE
 - 5: East Calgary Landfill, 68 St & 17 Ave SE
 - 6: BFI, South of 184 Ave & Macleod Tr SE
 - 7: Ogden Site, 9404 24 St SE
 - 8: Glenloch Hill, 45 St & 25 Ave SW
 - 9: Springbank Landfill, South of 62 Ave at 3 St & 6 St SE
 - 10: Blackfoot Landfill, East of Burbank Rd at 56 Ave & 64 Ave SE
 - 11: Highfield Dry Waste, North of 42 Ave & South of 14 St SE
 - 12: Manchester Yards, Dartmouth Rd & 26 Ave SE
 - 13: Nose Creek Landfill, North Zoo Parking Lot
- Hazardous Waste (Drop-off) Sites**
 - 1: Fire Station #4: 18 Moncton Rd NE
 - 2: Fire Station #17: 3740 32 Ave NW
 - 3: Fire Station #24: 2607 106 Ave SW
 - 4: Fire Station #25: 271 Midpark SE
 - 5: Spynhill Landfill, 112 Ave NW
 - 6: East Calgary Landfill, 68 St & 17 Ave SE
 - 7: Sheppard Landfill, 52 St & 114 Ave SE
- Green Map System**
 - 1: Pathway - Downtown Loop, Bhen 14 St Bridge & St Patrick's Island
 - 2: Prairie Winds Park, 54 Ave & Castleford Blvd NW
 - 3: Deerfoot Athletic Park, 15 St & 14 Ave NE
 - 4: Confederation Park, 3204 Collingwood Dr NW
 - 5: Bonness Park, 49 Ave NW
 - 6: St Andrews Heights, South of 16 Ave & University Dr NW
 - 7: Edworthy Park, via Edworthy St SW or Montgomery View NW
 - 8: Pathway, 14 St to Home Rd NW (Bow River north bank)
 - 9: Carburn Park, Riverview Dr SE
 - 10: Olympic Plaza, 7 Ave & 8 Ave 1 St - 2 St SE
 - 11: Erin Woods Park, Ermevoo Dr SE
 - 12: Fish Creek Provincial Park, Bobbottom Trail to Sikome Circle SE
 - 13: Maple Ridge Golf Course, 1240 Maple Glade Dr SW
 - 14: Shaganappi Point, 1200 26 St SW
 - 15: Canada Olympic Park, Canada Olympic Road SW
 - 16: Glenloch Hill, 45 St & 25 Ave SW
 - 17: Stanley Park, 42 Ave SW
 - 18: River Park, 144 St south of 38 Ave SW
 - 19: Rockwood Park, SW corner of Crowchild Tr & 33 Ave SW
 - 20: Trail System, North-South Glenmore Park
 - 21: Community Operated Lake, Midnapore

For more information on Calgary's GreenMap icons, visit our website at: www.telusplanet.net/public/sustcalg

- Nature**
 - Wetlands**
Fresh water ecosystems where many kinds of wildlife flourish on or near the water
 - Bird / Wildlife Viewing**
Where animals and birds can be viewed in the wild using their instincts to thrive
 - Special Trees**
Trees that have historical importance or are especially beautiful, large, old or rare
 - Scenic Vista**
Favorite places to see what makes the city's environment special
 - Winter Activity**
Where winter activities can be enjoyed without damaging the environment
- Infrastructure**
 - Drinking Water Source**
Source for municipal drinking water
 - Recycling Depot**
Drop-off site for materials that can be reprocessed or recycled
 - Hazardous Waste (Drop-off)**
Drop-off location for materials hazardous to humans, fauna or flora
 - Landfill**
Municipal solid waste dump where garbage and soil are layered together
 - Energy Generation Facility**
Location where alternative energy is generated
- Pollution Sources**
 - Emissions - Air, Land and Water**
Contamination source of the air, land and/or water
 - Remediation Site**
Cleaned up site ready for natural systems to take over or to be redeveloped
- Economic Development**
 - Green Business**
Business which buy, work with or sell products made from recycled materials
- Information**
 - Environmental Education**
Socially responsible non-profit or educational group, club or advocacy group
- Culture and Design**
 - Eco Kid Friendly**
Environmentally engaging area safe and accessible to children
 - Eco Building**
Made with responsible materials and building systems
 - Cultural / Historical**
Built with historic, cultural, architectural value
- Renewable Resources**
 - Composting**
Where plant materials are turned into rich new soil
- Mobility**
 - Pedestrian Zone**
Interesting pedestrian friendly auto-free areas
 - Pathways & Bikeways****
Off-street pathways shared with pedestrians & on-street bikeways shared with cars
 - C-Train Route****
Public transportation system of C-Trains interconnected with bus routes
 - Park'n Ride Lot**
Parking lot for motorists to park and use transit alternatives
 - Alternative Fuel**
Compressed natural gas, propane, bio-fuel or hydrogen fuel location

Special Thanks:
Canada Millennium Partnership Program
We are grateful to the Canada Millennium Partnership Program for making the production of this map possible.

Base Map:
COPYRIGHT© 2000 The City of Calgary
All rights reserved. No part of this map may be reproduced in any form without written consent of The City of Calgary and appropriate license agreement. The City of Calgary provides this information in good faith, but provides no warranty nor accepts any liability arising from incorrect, incomplete, or misleading information or its improper use. Information is maintained on a regular basis.
For licence information, contact: Web Business and Data Licensing Services, The City of Calgary, phone (403) 298-6801.

Disclaimer:
This version of the Calgary Green Map was created by Sustainable Calgary volunteers on the Green Map Team. While every effort has been made to be accurate and reliable, the Green Map Team provides no warranty nor accepts any liability arising from incorrect, incomplete or misleading information or its improper use.

Green Map Icons:
© Modern World Design 1996-99
All rights reserved.

***Pathways & Bikeways:** See the Calgary Pathway & Bikeway Map or contact the City of Calgary for details: 268-1574 www.govc.ca

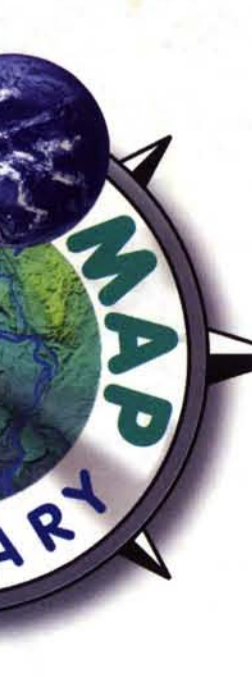
****C-Train:** Calgary's transit system provides an excellent transportation alternative. Contact Calgary Transit for details: 262-1000 www.calgarytransit.com

GREEN MAP SYSTEM
Scale
0 km .5 km 1 km

GREEN MAP CALGARY

Sustainable Calgary

2000-2001



The long range objective of this map is to contribute to the transformation of Calgary into a sustainable city. From a global ecological perspective Calgary, although a city with a relatively high quality of life, is also relatively unsustainable. Canadians in general and Calgarians in particular consume a high percentage of the natural wealth of the planet to live as we do. By highlighting a broad spectrum of ecological sites, we hope to move all sectors of society, government, business and civil society in the direction of sustainability with the help of the Calgary Green Map.